

## Winter Hiking & Snowshoeing

### Philosophenweg D3 / E3

**Winter Hike** Ramsau am Dachstein  
 ☀️ 0:30 h → 1.7 km ↑↓ 40 vm ■ easy  
**Starting point: Waldschenke or tourist office in Ramsau**  
 The forest link between Ramsau village and Ramsau Kulm is a classic for the locals – a ca. 30 min flat forest path, also connecting to numerous winter hiking paths. Start or finish in the Waldschenke. Connects with: Panoramaweg, Kullmbergunde, Leitenrunde and hiking paths in the direction of Rössing.

### Kulmbergunde D3

**Winter Hike** Ramsau am Dachstein  
 ☀️ 3:15 h ☁️ 10.3 km ↑↓ 150 vm ■ moderate  
**Starting point: Dachstein Event Center**  
 From the cross-country stadium in Ramsau village and via Kulm and Vorberg, using the "Schlittenweg" you will circle the entire Kulmberg. This path is also the main route for sleigh rides which complete this same 10 km route in roughly two hours.

**Have you already booked your sleigh ride?**  
 Full info about sleighride providers can be found on our website at: [www.schladming-dachstein.at/horsedrawnsleigh](http://www.schladming-dachstein.at/horsedrawnsleigh)

### Kulmberg Waldweg D3

**Winter Hike & Snowshoe Hike** Ramsau am Dachstein  
 ☀️ 2:50 h ☁️ 8.9 km ↑↓ 170 vm ■ moderate  
**Starting point: Waldschenke**  
 From the starting point, you will circle the run-out area of the ski jump and enter the Philosophenweg, a path leading on a gentle walk to Kulm. Continue either along the road or, from Skistube Steiner, along the forest path. From there, follow the signposted path, continue to Kulmbergstraße. From the Vorbergstraße you will climb briefly uphill to the roller-ski path. At the top, the forest path makes a turn, leading past Hotel Herold. Then, after a short stretch next to the road, branch off and you will again come to the ski-jump grounds.

### Skiweg Ramsau D3

**Winter Hike** Ramsau am Dachstein  
 ☀️ 2:30 h → 7.0 km ↑ 500 vm ■ moderate  
**Starting point: Dachstein Event Center**  
 During the uphill climb, you are greeted by open fields as far as Gasthof Edelbrunn. Followed by sections of forest and open terrain amid alpine pastures. In summer, this classic tour is known as the "5 Huts Path", dotted with traditional huts and hill farms that tempt with refreshments. Glorious views of the snowcapped Tauern mountains and the Dachstein south face add to the joys of this tour.



### Halsersweg Sleigh Route D3

**Winter Hike** Ramsau am Dachstein  
 ☀️ 1:45 h → 6.0 km ↑ 170 vm ■ moderate  
**Starting point: car park "Rittsberg Süd"**  
 From the Greimelbacher via the Röstleralm, the maintained sleigh route takes you on a moderate climb to the Halseralm. The flambéed Kaiserschmarrn at the Halseralm is an experience in its own right – you simply have to order it. This path continues via the Sonnenalm to the Wiesmahdalm (turning point).

### Panoramarunde D3

**Winter Hike** Ramsau am Dachstein  
 ☀️ 3:00 h ☁️ 16.7 km ↑↓ 250 vm ■ moderate  
**Starting point: car park "Rittsberg Süd"**  
 The main winter hiking path is known as the "Panoramarunde". It extends lengthwise across the plateau, linking Schildehen-/Dachsteinstraße (toll gate), Ramsau village, Ramsau Kulm, Vordere Ramsau and Rössing, ending at the famous loden mill in Rössing. If you walk the plateau once, you will have seen every "corner" of Ramsau. Constantly accompanied, as the name suggests, by the amazing panorama.

### Leitenrunde E3

**Winter Hike** Ramsau am Dachstein  
 ☀️ 2:15 h ☁️ 7.2 km ↑↓ 210 vm ■ easy  
**Starting point: tourist office in Ramsau**  
 The Leitenrundweg leads via Obere Leiten to Untere Leiten, also connecting to the Panorama- and Kullmbergunde paths. Located in the south, leading through broad meadows and a short patch of forest, this path affords beautiful views extending to the Niedere Tauern peaks. Beginning at the Ramsau tourist office, choose between the path in the direction of Obere Leiten or Untere Leiten. On the path to Untere Leiten, you will reach a fork where a further variant takes you to Gasthof Sonnenhugel.

### Dureggrunde D2

**Snowshoe Hike** Ramsau am Dachstein  
 ☀️ 4:30 h ☁️ 12.4 km ↑↓ 320 vm ■ difficult  
**Starting point: Gasthof Edelbrunn**  
 Start at Gasthof Edelbrunn, follow the ski path past the Schlitzalm to the Glösalim. From here, continue to a viewing point at the Schlitzalm, then to the Glösalim. Now make your way to the "Röstelstein" (Duregg), another scenic spot. Far from civilization, snowshoes are the best, most enjoyable choice for this tour. The more exposed the route, the more that good local knowledge and experience in high-alpine nature are essential. The mountain and ski guides of Ramsau as well as the ski and cross-country schools offer outstanding guide services leading you to some of the most beautiful and safest areas to tour.

### Almenrunde D2

**Snowshoe Hike** Ramsau am Dachstein  
 ☀️ 3:20 h ☁️ 7.5 km ↑↓ 260 vm ■ moderate  
**Starting point: Gasthof Edelbrunn**  
 First along the ski path, then branch left in the direction of the Schlitzalm followed by the Walcheralm. The tour leads you through beautiful, sparse larch forests. Above the Brandalm, you will meet up with the ski path again, which you will follow back to the starting point.

## Cross-Country Skiing in Ramsau am Dachstein

### Austria's sunniest cross-country center

The mighty Dachstein is enthroned above you, the sun smiles in your face, and the winter air is as clear as can be. High time for you to unpack your cross-country skis, not least because Ramsau am Dachstein – a true cross-country Eldorado – greets you with 220 km of perfectly maintained trails, just waiting to be conquered by you!

The variety-packed trail network and everything else you need to know about cross-country skiing in Ramsau am Dachstein is clearly compiled and presented in the Ramsau am Dachstein cross-country brochure. You can pick it up free of charge from area tourist offices as well as your host.

Complete info about our cross-country ski trails can be found here: [www.schladming-dachstein.at/xc-ski](http://www.schladming-dachstein.at/xc-ski)



### Ramsau Ort D3

**Snowshoe Hike** Ramsau am Dachstein  
 ☀️ 2:00 h ☁️ 5.5 km ↑↓ 220 vm ■ easy  
**Starting point: Dachstein Events Center**  
 This short, easy snowshoe tour gives you your first overview of Ramsau village. Starting at the cross-country stadium in Ramsau village, the tour leads through larch forest to Gasthof Edelbrunn and back again. It is the perfect beginners' tour, indicated in open terrain by the purple snow poles.

### Rössingrunde E3

**Snowshoe Hike** Ramsau am Dachstein  
 ☀️ 2:45 h ☁️ 7.3 km ↑↓ 250 vm ■ moderate  
**Starting point: Alta Mühle car park**  
 Beautiful, relaxed and peaceful snowshoe tour, great opportunity for sporty rookie snowshoers to explore the "Rössing" area of Ramsau and its traditional refreshment opportunities. From the starting point in the direction of Ramsau Rössing. Via idyllic forest paths and snow-blanketed meadows, you will come to Bauernhof-backstube Rössingerhof. Return via the cross-country ski trail as far as the loden mill, then steadily uphill to the starting point.

### Vorberg D3

**Snowshoe Hike** Schladming/Ramsau  
 ☀️ 2:00 h ☁️ 5.5 km ↑↓ 200 vm ■ moderate  
**Starting point: Hikers' info portal in Vorberg Arnika**  
 Beautiful snowshoe tour through forests and meadows on the sunny Vorberg plateau. Setting out from the Brandstättnerhof, hike east along the so-called "Lochweg" on the forest's edge, then through Wolfsschlucht canyon to Ramsau Vorberg. The Sommer-wanderweg will then bring you back to your starting point.

**Our Mountain & Ski Guides**  
 You will find a listing of all mountain and ski guides on our website at: [www.schladming-dachstein.at/mountainguides](http://www.schladming-dachstein.at/mountainguides)

### Lärchenweg D3

**Winter Hike** Ramsau am Dachstein  
 ☀️ 0:45 h → 2.3 km ↑ 200 vm ■ easy  
**Starting point: Dachstein Events Center**  
 A forest path via the Ramsbergerhof to Gasthof Edelbrunn, where you can also head out across the alpine pasture areas of Ramsau. Options for extended tours include the Dureggunde, Almenrunde and Skiweg Türwandhütte.

### Sattelbergweg E2 / E3

**Winter Hike** Ramsau am Dachstein  
 ☀️ 1:00 h → 3.3 km ↑ 60 vm ↓ 120 vm ■ moderate  
**Starting point: Gasthof Sonnenhugel/Almstube**  
 Connects Obere or Untere Leiten with Ramsau Rössing. A short stretch via a forestry lane through forest. In Rössing, options to continue along the Panoramarunde as well as the Leitenrunde.

### Buchenweg E3

**Winter Hike** Ramsau am Dachstein  
 ☀️ 1:45 h ☁️ 6.5 km ↑↓ 180 vm ■ easy  
**Starting point: tourist office in Ramsau**  
 A beautiful forest path amid beech trees, between Untere Leiten and Obere Leiten in Ramsau am Dachstein. It connects Reiter-pension Brandstättner with the Kleihuberhof and brings you to the Leitenrundweg.

### Rittsberg Hut Hike C3

**Winter Hike** Ramsau am Dachstein  
 ☀️ 1:30 h ☁️ 5.2 km ↑ 100 vm ■ moderate  
**Starting point: Rittsbergbahn mountain station**  
 The new combo lift now lets you enjoy a culinary hike in winter as well. From the Rittsstadt, right next to the mountain station, you will begin your winter hike in the direction of the Sonnenalm, which lies on the south side of the Rittsberg. A good quarter-of-an-hour later and you will have reached the Halseralm. From here, your path takes you to the Röstleralm, then back to the valley lift station of the Rittsbergbahn.

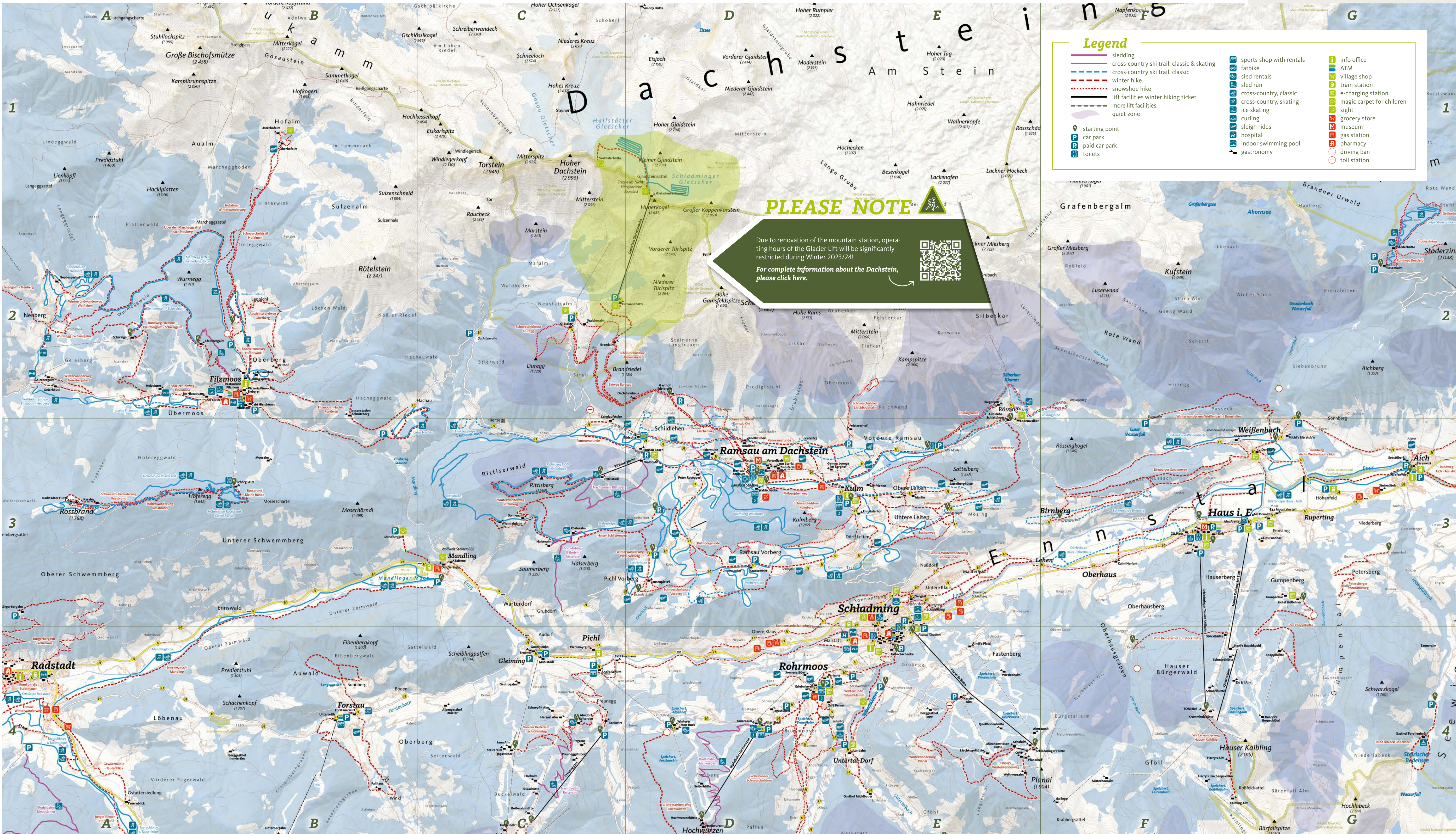
### Rittsberg Summit Hike C3

**Winter Hike** Ramsau am Dachstein  
 ☀️ 1:30 h ☁️ 5.2 km ↑↓ 100 vm ■ moderate  
**Starting point: Rittsbergbahn mountain station**  
 The Summit Hike begins at the mountain station of the Rittsbergbahn. From here, you will walk about 20 minutes to the summit cross (elev. 1682 m), where you can enjoy a marvelous view of the Dachstein massif. Continue via the winter hiking path in a loop next to the alpine cross-country ski trail. At the halfway point, you will come to a sign for a turnoff sending you back to the Rittsstadt and the mountain station.



### Winter Hiking Path Weißenbach – Burgstaller – Weißenbach G3

**Winter Hike** Haus im Ennstal  
 ☀️ 2:30 h ↔ 8.0 km ↑↓ 280 vm ■ moderate  
**Starting point: car park at the Kneipp ponds, Weißenbach**  
 A small village with a big affinity for those little details, paths through snowy forests and places with open views of the Hauser Kaibling – this hike offers you everything. Return the same way!



## Winter experience map

Schladming | Ramsau am Dachstein | Haus



**Discover even more of Schladming-Dachstein**  
 And that's not all ...  
 Our Schladming-Dachstein Region offers much more than this one map. In our two other Winter experience maps, you will find many other magnificent winter hikes and snowshoe tours, magical ski trails and numerous winter activities – all just waiting to be discovered by you.  
 Pick them up for free at one of our local tourist offices.  
 NOTICE  
 The winter experience maps Center and East are only available in German.

## Discover even more of Schladming-Dachstein

And that's not all ...

Our Schladming-Dachstein Region offers much more than this one map. In our two other Winter experience maps, you will find many other magnificent winter hikes and snowshoe tours, magical ski trails and numerous winter activities – all just waiting to be discovered by you.



## Winter Experiences

Even more adventure.  
 Also away from the beautiful tours, the Schladming-Dachstein Region has countless winter experiences in store for you – in our world, boredom is never a factor! The action of fatbiking, screams of pure joy while sledding, priouettes on the ice, or simply snuggled up in the back of a horse-drawn sleigh enjoying the breathtaking countryside – you will find all of this and more in our brochure "Winter Experiences".

If you prefer not to explore on your own, you can also join one of our guided tours whenever you please – in a group, as we know, things are always more fun.

All program highlights can be found in our brochure as well as online at: [www.schladming-dachstein.at/wochenprogramm](http://www.schladming-dachstein.at/wochenprogramm)





## Winter Hiking & Snowshoeing

### Winter Hikes in Obertal

**Winter Hike** Schladming  
 ⌚ 4:40 h ↔ 17.2 km ↑ 250 vtm ■ moderate  
**Starting point:** hikers' info portal in Rohrmoos village center  
 Escape the outside world completely or simply spend a relaxing afternoon away from the pistes? Whatever the case, Obertal will be just right for you. This quiet valley is a wonderful opportunity for splendid winter hikes.

### Winter Hike in Untertal

**Winter Hike** Schladming  
 ⌚ 2:00 h ↔ 7.6 km ↑ 30 vtm ■ easy  
**Starting point:** Gasthof Tetter  
 From Gasthof Tetter, the nicely maintained, easy winter hiking path leads to Gaschus Weisse Wand. Without any major effort, you will be able to enjoy the fresh air and tranquility of magical Untertal. You will return via the Sondl-Alm, inviting you to crown your expedition with a delicious bite to eat.

### Rohrmoosrunde to Schladming

**Winter Hike** Schladming  
 ⌚ 1:45 h → 5.5 km ↑ 62 vtm ↑ 300 vtm ■ easy  
**Starting point:** hikers' info portal in Rohrmoos village center  
 A variety-filled hike from Rohrmoos to Schladming, with many friendly inns and restaurants inviting you to stop in and warm up. This is not the shortest, but definitely one of the most enchanting ways to walk from Rohrmoos to Schladming.

### Talbackklamm

**Winter Hike** Schladming  
 ⌚ 2:00 h ↔ 6.2 km ↑ 220 vtm ■ easy  
**Starting point:** Kratzer car park in Schladming  
 The first part of this hike takes you through the Talbackklamm, a gorge that is especially magical in winter. Ice rock formations, snow-covered cliffs and bizarre ice formations captivate young and old. From Untertal village, you will walk along the valley right up to the sunny Rohrmoos plateau. Various refreshment opportunities allow the way.

### Planai West – Talbackklamm

**Winter Hike** Schladming  
 ⌚ 1:20 h ↔ 3.5 km ↑ 20 vtm ↓ 180 vtm ■ easy  
**Starting point:** Planai West valley station  
 A scenic winter hiking path beginning with a short ride on the gondola lift, followed by a beautiful winter hike along the – especially in the afternoon – very sunny Spreitzweg through Talbackklamm and back to Schladming. On this winter hike, several highlights await you!

### Winter Hikes in Rohrmoos

**Winter Hike** Schladming  
 ⌚ 1:30 h ↔ 5.1 km ↑ 195 vtm ■ easy  
**Starting point:** hikers' info portal in Rohrmoos village center  
 Not only in summer is Rohrmoos an extraordinary hiking destination. In winter, too, it is a hikers' paradise. Enjoy a leisurely winter hike at the foot of the Hochwurzen and across the sunny Rohrmoos plateau.

### Sonnenrunde Schladming

**Winter Hike** Schladming  
 ⌚ 3:10 h ↔ 11.9 km ↑ 20 vtm ↓ 70 vtm ■ easy  
**Starting point:** hikers' info portal at Planai stadium  
 An easy though extended winter hike, leading you through the mountain town of Schladming and, on multiple occasions, next to the Enns river. Most of the hike takes you across the sunny hillsides of the Obere Klaus.

### Ennsrunde Schladming

**Winter Hike** Schladming  
 ⌚ 1:30 h ↔ 6.1 km ↑ 20 vtm ■ easy  
**Starting point:** hikers' info portal at Planai stadium  
 This pleasant winter hike for between times is ideal for beginners. It leads from the stadium in the direction of congress Schladming, passing it to the right and continuing to the right bank of the Enns. You will follow the Enns – essentially flat – as far as Lehen, then return to Schladming.

### Relaxing Winter Hike Römerrunde

**Winter Hike** Schladming  
 ⌚ 2:00 h ↔ 6.2 km ↑ 80 vtm ■ easy  
**Starting point:** hikers' info portal at Planai stadium  
 A pleasant hike on the "sunny side" of Schladming, treating you to beautiful views of the mountain town as well as Rohrmoos and the Hochwurzen beyond. Part of this tour leads you via a high road – once used by the ancient Romans, hence the name of this tour.

### 4-Jahreszeiten Wanderweg

**Winter Hike** Schladming  
 ⌚ 2:45 h → 5.9 km ↑ 570 vtm ■ moderate  
**Starting point:** Hotel Winterer, Hochwurzen IT chairlift valley station  
 The "Four Seasons" path leads you on a wide hiking path gently uphill, mostly through beautiful high forest, to the top of the Hochwurzen (elev. 1852 m). Choose whether to walk this winter hiking path uphill to the mountain station, or first ride the lift to the top, then enjoy a pleasant downhill hike to your original starting point.

### Winter Hike on the Reiteralm

**Winter Hike** Schladming  
 ⌚ 0:30 h → 1.2 km ↑ 90 vtm ■ easy  
**Starting point:** Preunegg Jet mountain station, Reiteralm  
 Von der Bergstation des Preunegg Jets wandert Du auf die Gasselhöhe zu und machst eine schöne kleine Runde im lichten Hochwald der Reiteralm. Diese einfache Winterwanderung bietet Dir wunderbare Ausblicke ins Ennstal und auf das Dachsteinmassiv.

### Reiteralm: from mountain to valley

**Winter Hike** Schladming  
 ⌚ 2:40 h → 9.3 km ↓ 610 vtm ■ moderate  
**Starting point:** Silver Jet mountain station, Reiteralm  
 From the starting point, just a few meters next to the piste and you will already find yourself on the Reiteralm winter hiking path. It leads through a beautiful stretch of forest to Almdorf Reiteralm, and from there along the Preuneggstrasse back to the valley. If you wish, you can then continue next to the railway line back to Gleining.

### Winter Hike Planai

**Winter Hike** Schladming  
 ⌚ 2:00 h ↔ 6.8 km ↓ 490 vtm ■ easy  
**Starting point:** Planai gondola mountain station  
 Winter hike along the Planaisattel from the mountain station of the Planai gondola down to the mid-station. Even without skis, it is possible to enjoy the snowy landscapes and marvelous views. IMPORTANT: From the Planai mountain station to the start of the Planaisattel and shortly before the mid-station, you will have to cross the ski piste – be extremely careful!

### Snowshoe Tour Obertal

**Snowshoe Hike** Schladming  
 ⌚ 4:45 h → 17.6 km ↑ 360 vtm ↓ 220 vtm ■ moderate  
**Starting point:** Rohrmoos Centre or Windbacherstube Obertal  
 This signposted tour leads from Rohrmoos to Obertal where, at the valley head, you can visit the historic nickel smelter. Right by the valley lift station of the Gipfelbahn Hochwurzen, Sport Titscherer and Ski Lenz both give you the opportunity to rent snowshoeing equipment!

### Snowshoe Tour to the Gasselhöhe

**Snowshoe Hike** Schladming  
 ⌚ 1:00 h ↔ 1.7 km ↑ 140 vtm ■ moderate  
**Starting point:** top station of the Gasselhöhe  
 6-seater chairlift, Reiteralm  
 From Gleining, ride the Silver Jet gondola and the Gasselhöhe 6-seater chairlift up to the Reiteralm. From the top station of the chairlift, you will set out on snowshoes heading south. An initial easy climb will bring you to the top of a small hill, before continuing your climb to the Gasselhöhe. Having arrived at the summit cross of the Gasselhöhe, you will be able to enjoy the wonderful views of the Schladminger Tauern, Dachstein massif, and Ennstal below.

### Snowshoe Tour to the Rossfeld

**Snowshoe Hike** Schladming  
 ⌚ 2:00 h ↔ 3.4 km ↑ 280 vtm ■ moderate  
**Starting point:** Hochwurzenhütte, Hochwurzen mountain station  
 The first part of this hike takes you first is initially a maintained winter hiking path. From the Hüttesattel, you find yourself in open terrain (don't forget avalanche safety gear incl. transponder, shovel and probe). Ride the Gipfelbahn Hochwurzen lift to the top of the Hochwurzen, which is the location of the starting point. Here, you can also stop for refreshments at the Hochwurzenhütte or the Hochwurzenalm. The snowy winter landscape on Rossfeld summit is simply magnificent!



### Rohrmoos Snowshoe Tour

**Snowshoe Hike** Schladming  
 ⌚ 2:00 h ↔ 5.3 km ↑ 240 vtm ■ easy  
**Starting point:** hikers' information portal at Gipfelbahn Hochwurzen valley station  
 The Rohrmoos snowshoe tour leads via forest paths and gullies as well as the open, snowy meadows of the "Rohrmooser Frei". Refreshment opportunities include the Tauernalm and the "Alte Stadt" at Familienhotel Austria.

### Snowshoe Tour on the Vorberg

**Snowshoe Hike** Schladming/Ramsau  
 ⌚ 2:00 h ↔ 5.4 km ↑ 200 vtm ■ easy  
**Starting point:** Brandstättnerhof, Vorberg  
 This snowshoe tour connects two communities, both with the name of "Vorberg". You will begin in Pichl-Vorberg and hike through Wolfsschlucht canyon to Ramsau-Vorberg. Although different communities, both "Vorbergs" have one thing in common: They are both sunny spots.

### Evening Sledding Fun on the Reiteralm

**Winter Hike** Schladming  
 ⌚ 1:45 h → 3.5 km ■ easy  
**Starting point:** Almdorf Reiteralm/Hotel Edelweiß  
 From the rustic Hochalm, which you reach after a 90 min walk along a beautiful hiking path, a 3,5 km long, floodlit sled run leads directly to Almdorf Reiteralm.

### Hopsi's Winter Hiking Path

**Winter Hike** Schladming  
 ⌚ 1:00 h ↔ 2.6 km ↑ 120 vtm ■ easy  
**Starting point:** Planai gondola mountain station  
 This beautiful, family-friendly winter hike is located close to Hopsi Winterland near the Planai. It is a great opportunity to meet up with friends who are skiing on the Planai, then sit down to enjoy lunch together at one of the ski huts next to the winter hiking path.

### Winter Hike on the Reiteralm

**Winter Hike** Schladming  
 ⌚ 0:30 h → 1.2 km ↑ 90 vtm ■ easy  
**Starting point:** Preunegg Jet mountain station, Reiteralm  
 Von der Bergstation des Preunegg Jets wandert Du auf die Gasselhöhe zu und machst eine schöne kleine Runde im lichten Hochwald der Reiteralm. Diese einfache Winterwanderung bietet Dir wunderbare Ausblicke ins Ennstal und auf das Dachsteinmassiv.

### Winter Hike Pichl-Vorberg

**Winter Hike** Schladming/Ramsau  
 ⌚ 2:30 h ↔ 7.9 km ↑ 310 vtm ■ easy  
**Starting point:** Vorberg Arnika hikers' info portal  
 The ideal starting point for this pleasant hike is close to Pension Arnika. A broad, cleared footpath treats you to a magnificent view of the Schladminger Tauern massif. Traditional huts (Rösteralm, Halseralm, Sonnenalm and Wiesmahdalm), magical scenery and the glorious winter countryside will make this day truly special. You will return via the same route back to the start.

### "Villages Hike" in Ennstal

**Winter Hike** Haus im Ennstal  
 ⌚ 1:30 h ↔ 5.1 km ↑ 50 vtm ■ easy

**Starting point:** Erlebnisfreibad Haus im Ennstal  
 Experiencing an unforgettable hike in beautiful, snowy Ennstal. Cleared winter hiking paths lead from the village of Haus across a suspension bridge to Weißenbach (or vice versa).

### Petersberger Panoramaweg

**Winter Hike** Haus im Ennstal  
 ⌚ 2:00 h ↔ 5.9 km ↑ 260 vtm ■ moderate  
**Starting point:** Algenhof on the Petersberg  
 Drive up by car until you are close to the Algenhof on the Petersberg. From there, the hike leads gently uphill, past traditional hill farms such as the Schwarzkogler, Poser and Pölz, to the endpoint at the Schweigerhof on the Petersberg. Return via the same route.

### From the Kemeterhof to the Stöcklhütte Haus im Ennstal

**Winter Hike** Haus im Ennstal  
 ⌚ 1:30 h ↔ 5.3 km ↑ 175 vtm ■ easy  
**Starting point:** Kemeterhof on the Oberhausberg  
 Above the village of Haus at ca. 1200 m above sea level, you can enjoy a leisurely winter hike through sunny forests, then meet up with your skiing friends or family at the Stöcklhütte. Return via the same route.

### Winter Hiking Path Hauser Kaibling

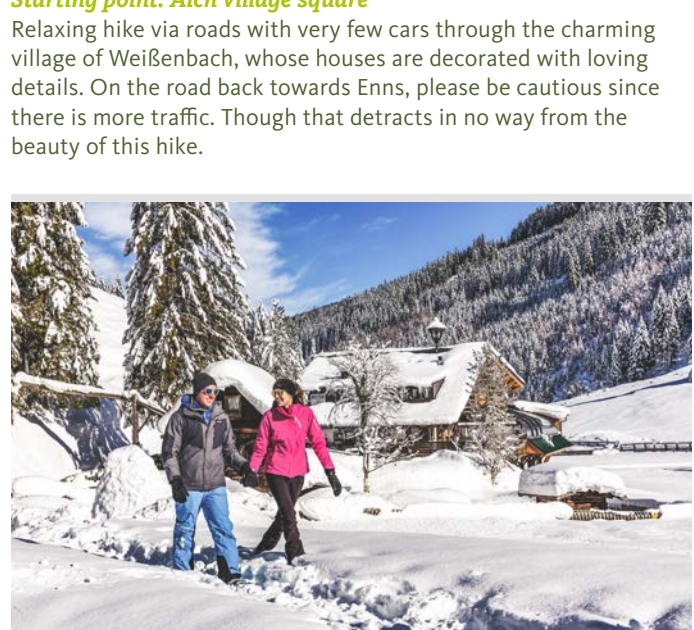
**Winter Hike** Haus im Ennstal  
 ⌚ 1:15 h ↔ 2.5 km ↑ 50 vtm ■ easy  
**Starting point:** Tauern gondola mountain station  
 From the mountain station of the Tauern gondola, hike past the Krummholztüsch and TOMZiel in the direction of the Kaiblingalm – straight to the new Harrys Alm. There, you can sit out on the big sunny terrace to enjoy Kaiserschmarrn, hot chocolate and a splendid view of the Dachstein massif. Return the same way and ride the Tauern gondola back down to Haus.

### Steirischer Bodensee

**Winter Hike** Aich  
 ⌚ 1:00 h ↔ 3.2 km ↑ 30 vtm ■ easy  
**Starting point:** car park at the Steirischer Bodensee, Sewiglat  
 This relaxing hike takes you on an easy walk to the Steirischer Bodensee, a natural jewel. Having arrived at the lake, why not enjoy refreshments at the Forellenhof. This excursion destination is well worth a visit at any time of year.

### Rundweg Aich – Weißenbach – Aich

**Winter Hike** Aich/Haus im Ennstal  
 ⌚ 2:00 h ↔ 7.4 km ↑ 80 vtm ■ easy  
**Starting point:** Aich village square  
 Rebalancing hike via roads with very few cars through the charming village of Weißenbach, whose houses are decorated with loving details. On the road back towards Enns, please be cautious since there is more traffic. Though that detracts in no way from the beauty of this hike.



### Rundweg Aich – Au – Aich

**Winter Hike** Aich  
 ⌚ 1:30 h ↔ 5.0 km ↑ 90 vtm ■ easy  
**Starting point:** Aich village square  
 From the village square in Aich, across the railway line and from there along the street to Au. Now continue across the bridge over the Enns, through the highway underpass, to Assach, and from there back to Aich. Along the way, you will be greeted by a few nice cafés and restaurants – where you can enjoy welcome refreshments.

### Ennsrundweg

**Winter Hike** Haus im Ennstal  
 ⌚ 1:30 h ↔ 4.3 km ↑ 50 vtm ■ easy  
**Starting point:** outdoor pool in Haus im Ennstal  
 Easy hike next to the River Enns to Oberhaus, then via an accompanying path back to Haus im Ennstal. Also plan in a visit to the gothic Margaretentherie church (anno 1520) in Oberhaus – entrance through the south portal. The church is open during the daytime, a rewarding detour for anyone interested in culture.

### Birberger Sonnenweg

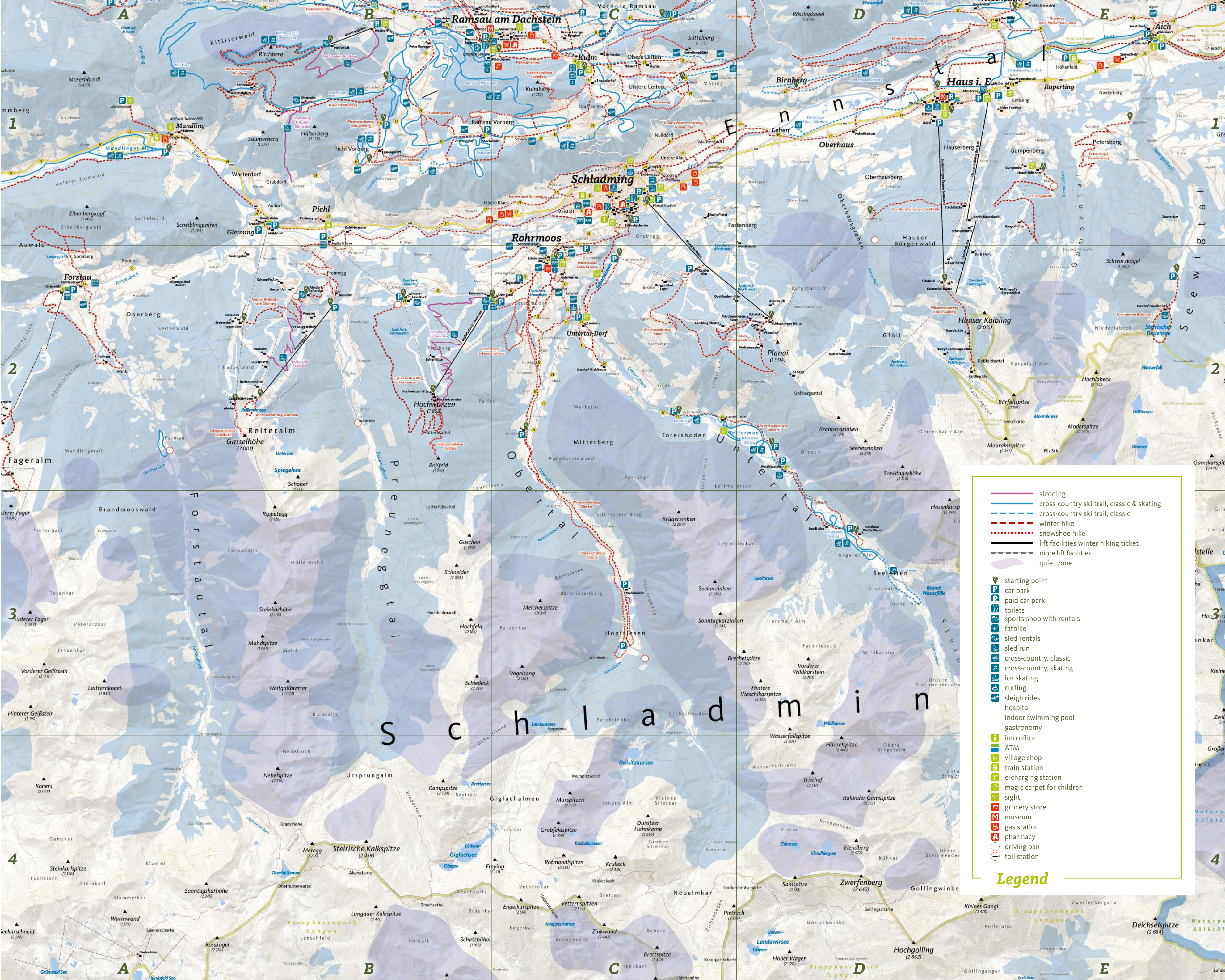
**Winter Hike** Haus im Ennstal  
 ⌚ 3:00 h ↔ 8.0 km ↑ 190 vtm ■ moderate  
**Starting point:** Grundnerhof on the Birnberg  
 A leisurely winter hike on the sunny Birnberg plateau with magnificent view of the ski mountains inside the Schladming 4 Mountain Ski Area. Also along this hike: numerous beautiful farmhouses for you to admire.

### Winter Hiking Path Knapplhütte

**Winter Hike** Haus im Ennstal  
 ⌚ 2:30 h ↔ 8.2 km ↑ 380 vtm ■ moderate  
**Starting point:** Hotel Höflehner on the Gumpenberg  
 Setting out from Natur- & Wellnesshotel Höflehner on the Gumpenberg, follow the path uphill, past the deer feeding station and the ski lift until you reach the Knapplhütte. ALTERNATIVE: Ride up on the "Höf-Express T" chairlift, then hike down the path to Natur- & Wellnesshotel Höflehner. IMPORTANT: On occasion, this path crosses the ski piste. Return the same way.

### Steirerloipe Vorberg

**Classic & Skating** Schladming/Ramsau  
 ⌚ 1:15 h ↔ 5.0 km ↑ 80 vtm ■ moderate  
**Starting point:** Vorberg Arnika hikers' info portal  
 The Steirerloipe is tracked for "skating" as well as classic technique, and feeds directly into the Ramsau cross-country trail network, putting a grand total of 220 km of pure XCing enjoyment right there before your feet. Making a broad loop across the field close to Hotel Steierhof and a figure-of-8 in the area of the Oberberner/Unterherner, the trail leads to past your original starting point on the opposite side of the road. A little later, you have the option of ending your Steirerloipe tour or switching to the Halseralpe.



**Legend**

- sledding
- cross-country ski trail, classic & skating
- - - cross-country ski trail, classic
- - - winter hike
- ... snowshoe hike
- lift facilities winter hiking ticket
- - - more lift facilities
- - - quiet zone

**Starting Point**

- P car park
- P paid car park
- 👜 collection
- 👜 sports shop with rentals
- 👜 fatbike
- 👜 sled rentals
- 👜 sled run
- 👜 cross-country, classic
- 👜 cross-country, skating
- 👜 ice skating
- 👜 curling
- 👜 sleigh rides
- 👜 hospital
- 👜 indoor swimming pool
- 👜 gastronomy
- 👜 info office
- 👜 museum
- 👜 village shop
- 👜 train station
- 👜 e-charging station
- 👜 magic carpet for children
- 👜 sight
- 👜 grocery store
- 👜 pharmacy
- 👜 driving ban
- 👜 toll station

## Winter Hiking Ticket

Your ticket to a winter adventure.

It's hard to imagine anything more beautiful than enjoying the serenity of nature in a snow-covered landscape or taking walks across snow-capped mountain peaks. With the Schladming-Dachstein Winter Hiking Ticket, you can take full advantage of the region's ski buses as well as 21 mountain lifts and other attractions. Experience the winter magic of the Schladming-Dachstein Region as you create unforgettable memories in nature.

As a winter fan without sporting equipment, you are still welcome to ride the following lifts with your Winter Hiking Ticket:

**Hauser Kaibling:** 8-passenger gondola | Tauern gondola | Quatralpin | Höf-Express I

**Planai:** planai gondola | Planai West | Rohrmoos I und II | Hochwurzen I und II

**Reiteralm:** Silver Jet | Preunegg Jet | DSL Reiteralm I (Pichl) | Sepp'n Jet | Gasselhöhe II

**Galstenberg:** Galstenberg gondola

**Fageralm:** DSL Forststuba | DSL Jägerlift

**Dachstein:** Dachstein Glacier Lift (1x in 7 days)  
 Limited opening hours due to renovation of the mountain station!



Detailed information about prices and services can be found at: [www.schladming-dachstein.at/winterwanderticket](http://www.schladming-dachstein.at/winterwanderticket)



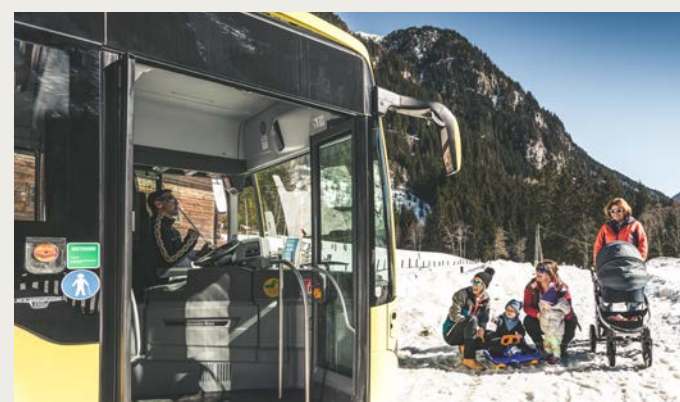
## Bus Timetables

Reach your destination comfortably and safely.

If you want to leave your car parked during your holidays, our buses are right there when you need them. Take things easy and allow yourself to be chauffeured to your favorite places – our ski and valley buses are there for you, ensuring you reach your destination safely.

Also a great opportunity to take full advantage of your Winter Hiking Ticket or the Ramsau WinterCard. Your car, but also our environment will thank you for it.

Current timetables and fare information can be found at: [www.schladming-dachstein.at/bus](http://www.schladming-dachstein.at/bus)



**Liability Disclaimer:** All information was compiled with great care based on the latest input. However, no liability for the aforesaid information is accepted and no claim is made with respect to completeness. Use of these tours is exclusively at your own risk and subject to your own responsibility. That said, liability for potential accidents or damages of whatever nature are expressly excluded. Each person is personally responsible for their route selection as well as accurately estimating their own experience and abilities, as well as the alpine dangers which they might face!

**Imprint:**  
 Publisher: Tourismusverband Schladming-Dachstein, Executive Director: Mag. (FH) Mathias Schallteiber, Ramsauerstraße 756, 8970 Schladming  
 Concept, design: G.A. Service GmbH, ga-service.at

**Photos:** Mathias Gartner, photo-austria.at, Erwin Rittsberg/Hans-Peter Steiner, Hans Simonhofer, Christoph Huber, René Eduard Penha, Christoph Lukas, Gerhard Pilz, Planai-Hochwurzenbahnen/David Stocker, Peter Burgstaller, Veronika Grün-schacher-Berger, Naturpark Sökitaler

**Cartography:** © Printmaps.net / OSM Contributors, Aufbereitung: Gerhard Pilz  
 Print: Druckhaus Rettenberg / Status: October 2023  
 Not liable for research errors, inaccuracies or errata. Subject to change.

## Cross-Country Ski Trails

### Tettermoor Skating Trail

**Classic & Skating** Schladming  
 ⌚ 0:40 h ↔ 4.0 km ↑ 20 vtm ■ easy  
**Starting point:** car park for the Tettermoor lookout tower  
 From the starting point, you will ski towards the mouth of the valley and Tettermoor. Right at the start, as well as below Gasthof Tetter on the far bank of the Untertalbach, you will encounter two beautifully maintained loops. Most of the ski trail is through flat terrain without climbs or downhill of note. Only the climb to Gasthof Tetter and the drop from there down to Tettermoor are moderately challenging.

### Almenrunde Skating Trail

**Skating** Schladming  
 ⌚ 1:00 h ↔ 5.5 km ↑ 30 vtm ■ easy  
**Starting point:** Sulzberg bridge or Gaschus Weiße Wand  
 The "skating" trails in Untertal are some of the easier trails in the Schladming-Dachstein region, mostly through flatish terrain. The Almenrunde owes its name to the numerous alpine huts in the valley bottom ("Almen"), offering various opportunities to sample regional cooking.



### Ortsloipe Mandling

**Classic & Skating** Schladming  
 ⌚ 0:40 h ↔ 3.4 km ↑ 20 vtm ■ easy  
**Starting point:** Adient company  
 Nice little cross-country ski circuit in Mandling, though connecting to the 130 km long trail network of Radstadt. From the Adient company, the trail leads in the direction of Radstadt, through riparian forest next to the River Enns. After around 1.5 km, the trail makes a loop and takes you underneath the Ennstalbusdenstraße B320 back to your starting point.

### Steirerloipe Vorberg

**Classic & Skating** Schladming/Ramsau  
 ⌚ 1:15 h ↔ 5.0 km ↑ 80 vtm ■ moderate  
**Starting point:** Vorberg Arnika hikers' info portal  
 The Steirerloipe is tracked for "skating" as well as classic technique, and feeds directly into the Ramsau cross-country trail network, putting a grand total of 220 km of pure XCing enjoyment right there before your feet. Making a broad loop across the field close to Hotel Steierhof and a figure-of-8 in the area of the Oberberner/Unterherner, the trail leads to past your original starting point on the opposite side of the road. A little later, you have the option of ending your Steirerloipe tour or switching to the Halseralpe.

### Mandlingloipe

**Classic & Skating** Schladming  
 ⌚ 2:00 h ↔ 9.6 km ↑ 100 vtm ↓ 80 vtm ■ easy  
**Starting point:** Adient company  
 The Mandlingloipe takes you next to the Enns as far as Radstadt, where many other beautiful cross-country trails await you. From the starting point, the trail runs through flat terrain with no steep passages of any note – a really relaxed tour.

### Village XC Trail Haus – Aich

**Classic & Skating** Aich/Haus im Ennstal  
 ⌚ 1:45 h → 10.3 km ↑ 45 vtm ■ moderate  
**Starting point:** outdoor pool in Haus or the Grafenwirt in Aich  
 The Village XC Trail between Haus and Aich can be started in either village. From the access point in question, simply follow the trail and the signs. Between the cross-country trails – in the area of Weißenbach – you will have to go a short distance on foot through the "Lärchsachen". In other sections, you might have to do a little bit of walking. IMPORTANT: Cross-country skiing here is only possible when there is enough natural snow on the ground!

### Kufsteinloipe Weißenbach

**Classic & Skating** Haus im Ennstal  
 ⌚ 1:00 h ↔ 6.3 km ↑ 60 vtm ■ moderate  
**Starting point:** Bierstüb'n pub  
 Cross-country skiing on the sunny side of Ennstal in the small village of Weißenbach with views of the snowy ski mountains of the Schladminger Tauern. Near the Bierstüb'n pub in Weißenbach, a pleasant, gently ascending trail leads past the village of Weißenbach in the direction of Rössing (Ramsau). After the turnaround point, you can either ski back to Weißenbach or continue to the original starting point. From there, you can ski one last loop in a southeasterly direction.

### Ortsloipe Mandling

**Classic & Skating** Schladming  
 ⌚ 0:40 h ↔ 3.4 km ↑ 20 vtm ■ easy  
**Starting point:** Adient company  
 Nice little cross-country ski circuit in Mandling, though connecting to the 130 km long trail network of Radstadt. From the Adient company, the trail leads in the direction of Radstadt, through riparian forest next to the River Enns. After around 1.5 km, the trail makes a loop and takes you underneath the Ennstalbusdenstraße B320 back to your starting point.

### Ortsloipe Mandling

**Classic & Skating** Schladming  
 ⌚ 0:40 h ↔ 3.4 km ↑ 20 vtm ■ easy  
**Starting point:** Adient company  
 Nice little cross-country ski circuit in Mandling, though connecting to the 130 km long trail network of Radstadt. From the Adient company, the trail leads in the direction of Radstadt, through riparian forest next to the River Enns. After around 1.5 km, the trail makes a loop and takes you underneath the Ennstalbusdenstraße B3